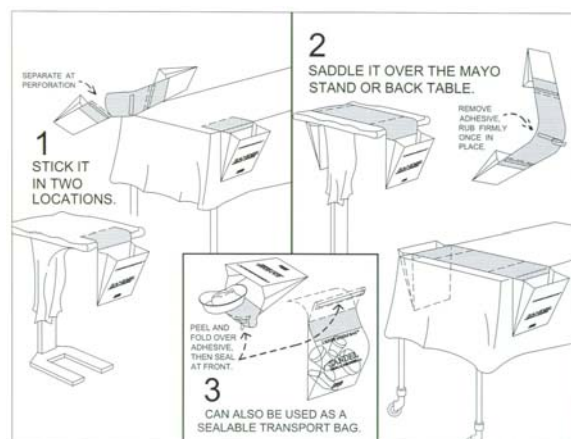


Z-Suture Saddle Bag™ Patent Pending

Problem: Paper suture bags often rip and fall from the sterile field onto the floor. Contents in bag are not easily visible for identification.



Z Suture Saddle Bag™ on Back Table



Problem Solved: Z-Suture Saddle Bag™

- Clear plastic saddle allows for easy identification of its contents
- Can be draped over a back table or mayo stand which eliminates the possibility of falling to the floor
- Perforated so it can be placed in different locations on the sterile field
- Orange color directs the user to the opening of the saddle bag eliminating the possibility of missing the bag

To Place your order call **1-866-764-3327**

Reorder No.	Description		Packaging	Case Qty.
1130	Z-Suture Saddle Bag™ 20" (S)		50/Bx 2 Bx/Cs	100
1134	Z-Suture Saddle Bag™ 24" (S)		50/Bx 2 Bx/Cs	100

Sandel Medical Industries, LLC • 19736 Dearborn Street – Chatsworth, CA • 91311
 Phone 866-764-3327 • fax 818-534-2510 • www.sandelmedical.com

In the healthcare industry, the color orange is a trademark of Sandel Medical Industries, LLC
 Lit. #130240 Rev. B 022509

